



# LEA-DER™ COATINGS

**Complete and comprehensive one-stop shop for human & environmental safety protection and fire suppression.**

Started in 1994, Lea-Der™ Coatings has quickly become the 'Lea-Der™' in oilfield safety and environmental products and services.

Since Day 1 our motto has been:  
***'Maximum Safety –  
Minimum Environmental Footprint.'***

We know that our clients need equipment now and that safety cannot be compromised. And we know how increasingly strict environmental guidelines are changing the way things get done. That is why we use only the highest quality, raw materials along with the best available production technology and highly skilled staff.

We ensure all environmental aspects are adhered to and we get the job done. On time. Every time.

#### ***Lea-Der™ Core Values:***

- HONESTY
- FAIRNESS
- RESPONSIBILITY
- RELIABILITY

THE LEA-DER™ COMMITMENT



340 SASKATCHEWAN AVE.  
SPRUCE GROVE, ALBERTA  
CANADA T7X 3B3

Phone: 1.780.962.5060  
[www.lea-der.com](http://www.lea-der.com)

# LEA-DER™ SUCCESS

LEA-DER™ SUCCESS HAS BE BUILT ON:  
**SERVICE. SERVICE. SERVICE.**

We know that the end consumer is the rig hand who requires not only a safe work site, but also comfort and reliability. Our products and partners support and protect the end consumer and the environment.

## OUR OFFICES

Lea-Der™ Coatings and Lea-Der™ International operate out of a state-of-the-art manufacturing and distribution facility in Alberta, Canada.

## OUR CLIENTS

We work with all the premier companies in the energy sector in:

**NORTH AMERICA** — CANADA • USA • MEXICO

**SOUTH AMERICA** — VENEZUELA • COLOMBIA • BRAZIL

**MIDDLE EAST** — SAUDI ARABIA • BAHRAIN • UNITED ARAB EMIRATES • QATAR • OMAN • KUWAIT • IRAQ

**CENTRAL ASIA** — KAZAKHSTAN • UZBEKISTAN • KYRGYZSTAN • TURKMENISTAN

**AFRICA** — ALGERIA • EGYPT • SUDAN • NIGERIA • CONGO • ANGOLA

**EUROPE** — ITALY • ENGLAND • THE NETHERLANDS • GERMANY • POLAND • RUSSIA

**SOUTHEAST ASIA** — SOUTH KOREA • SINGAPORE • INDONESIA • MALAYSIA • AUSTRALIA

## OUR PARTNERS



BLUE TRAYS INTL

WHO WE ARE



340 SASKATCHEWAN AVE.  
SPRUCE GROVE, ALBERTA  
CANADA T7X 3B3

Phone: 1.780.962.5060  
[www.lea-der.com](http://www.lea-der.com)



# LEA-DER™ SOLUTIONS

In the energy sector, specific problems need custom solutions. Our state-of-the-art manufacturing facility means our customers can order exactly what they need and we can build it exactly the way they want it. Problem Solved.



Our one-stop shop makes it easy to get everything for:

- Human safety
- Environmental Protection
- Rig Operation Tools
- Fire Suppression
- Noise Reduction
- Equipment Tarps/Covers



WHAT WE DO

 **LEA-DER™  
COATINGS**  
MANUFACTURERS & DISTRIBUTORS  
OF OILFIELD SAFETY PRODUCTS

 **LEA-DER™  
INTERNATIONAL**  
MANUFACTURERS & DISTRIBUTORS  
OF OILFIELD SAFETY PRODUCTS

340 SASKATCHEWAN AVE.  
SPRUCE GROVE, ALBERTA  
CANADA T7X 3B3

Phone: 1.780.962.5060  
[www.lea-der.com](http://www.lea-der.com)





# LEA-DER™ PRODUCTS

We custom make products to provide an accurate and *precise* fit to each individual rig.

- **Rotary Table & Rig Floor Matting** – custom fit matting to increase safety and traction.
- **Drill Pipe / Tubing Racking Mats** – protect pipe threads when racking multiple stands of drill pipe.
- **Drilling Fluid Containment Systems** – two versions available to accommodate any configuration required.
- **Invert Splash Ring** – a flexible one piece dual hardness ring designed for the rotary table to contain fluids and increase safety.
- **Tong Handle Guard** – prevent hand crush injuries and provide protection when manually using tongs during pipe make up and break out operations.
- **Stabbing Guide** – eliminate thread and seal damage to the pin or box end of the tubular connection.
- **Top Drive Kelly Bushing Saver** – designed for drill pipe stabilization to reduce incidence of items falling down the hole or damage to master bushings.
- **Mud Can** – industry designed for fluid containment, safety, cost reduction and environmental protection.
- **Composite Grating** – industrial grating in a variety of depths and patterns designed for heavier loads and longer spans.
- **Roll Up Traction Mats** – high traction, anti-slip product that is light weight and easy to handle/ move and reuse.
- **BOP Wear Rings** – prevents BOP damage and reduces stack repairs.
- **Drip Trays** – provide spill containment and environmental protection.
- **Urethane Bridge Gate Gasket** – gaskets made from high density elastomer for durability.
- **Line Containment** – spill containment for hammer unions, valves and pipes.

WHAT WE DO



# ROTARY TABLE & RIG FLOOR MATTING

## LEA-DER™ TRACTION MATTING

A two component custom blend of polyol polyurethane with embedded traction surface to withstand invert and other fluids encountered during the drilling process.

### FEATURES:

- Custom manufactured from custom blend industrial polyurethane
- Available in any colour with identified danger zones
- Aggressive aggregate embedded to create traction enhanced surface
- Stainless steel studs embedded for added traction
- Very durable and resistant to fluids
- Channels in the surface allow for fluid run off & added traction
- Worn surfaces can be repaired / restored / resurfaced
- Approximately 8lbs per sq. ft.

### ROTARY TABLE MATS

- 1.25"/31.75mm thick or as requested
- Usually safety yellow with orange sloped edges
- Company name, rig # and danger are embedded in a contrast colour

### RIG FLOOR MATS

- 1.25"/31.75mm or 0.75"/9.05mm thick or as requested
- Yellow and Red are the typical colors
- Can be attached to rig floors using conventional methods
- Mats are manufactured to customer specifications/supplied drawings for ease of fit







# SPECIFICATIONS

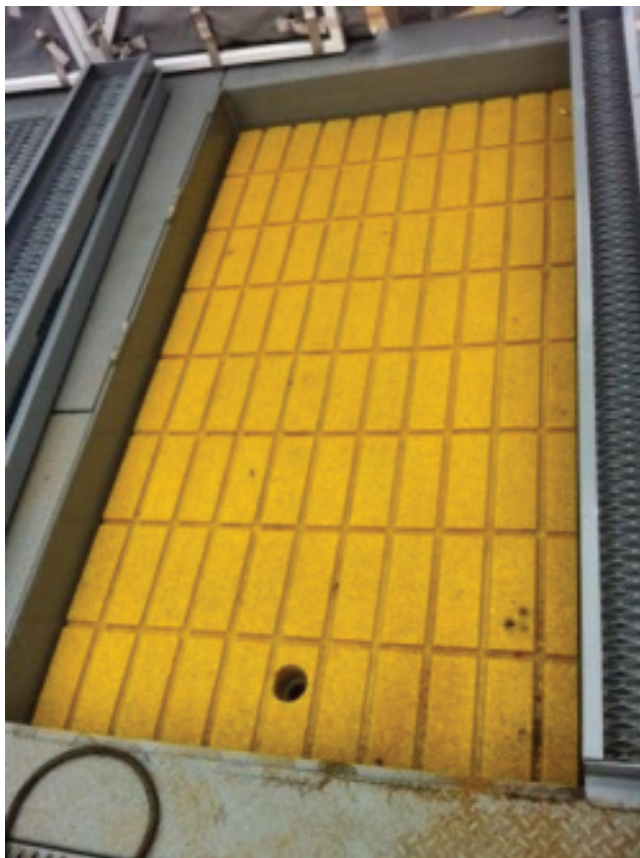
## PROPERTIES — WET:

- Solids: 100%
- VOC: 0
- Flash Point: 175°C

## PROPERTIES — DRY:

- Tensile strength: 3000 PSI
- Elongation: 231%
- Hardness: 95 Shore A
- Resurfacability: Excellent
- Taber Abrasion: 4.4 mg Loss / 1000 cycles CS 17
- Split Tear: 400 lb F/IN
- Weatherability: 2500 Hours Passed
- Water Absorption: Approx. < 1 %
- Cold Temp. Rating: -70°C
- Dielectric Strength: (ASTM D149) 400Volts / Mil
- Independent laboratory test performed UL94-HB test for flammability of plastic materials: PASS
- UV Rating: STABLE

# ROTARY TABLE & RIG FLOOR MATTING



# LEA-DER™ DRILL PIPE / TUBE RACKING MATS

Designed for use in the setback area for racking multiple stands of drill pipe during drilling operation. This matt is a uniquely designed for improved traction and pipe thread protection.

## FEATURES

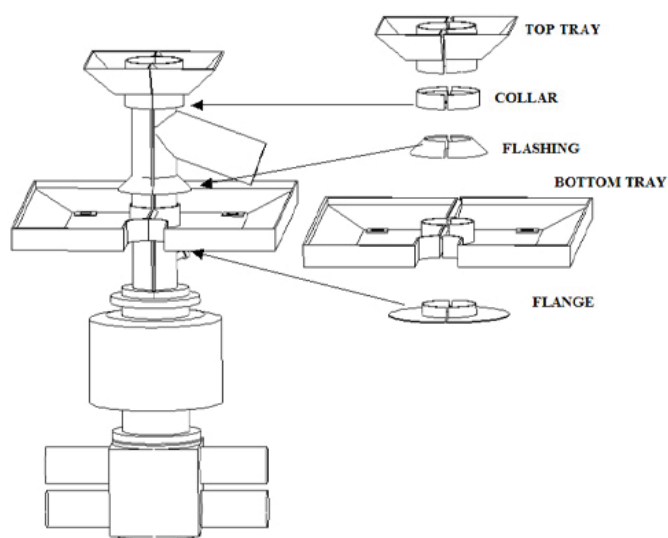
- Made from the highest quality custom blend of 100% solid elastomer and polypropylene for reliability under the most severe conditions
- Built in channels for maximum fluid drainage of the drill string
- Non slip texture
- Protects pipe threads
- Can easily be removed
- Bright safety yellow color

## SIZES

- All mats are custom made to fit
- Standard thickness is 1 ½", and custom thicknesses are available

# DRILL PIPE / TUBE RACKING MATS





# LEA-DER™ DRILLING FLUID CONTAINMENT SYSTEMS

Drilling Fluid Containment Systems contain drilling fluid under the drill floor reducing environmental exposure, keeping the cellar clean and saving drilling fluid.

## FEATURES

- Does not interfere with tooling or travelling in and out of the hole
- When fully installed there is no potential for leakage
- In bottom tray fluids are directed downward into the bottom tray
- Drain ports allow fluid to be drained into the cellar or tank
- No seals required so installation is quick and easy



# LEA-DER™ INVERT SPLASH RINGS

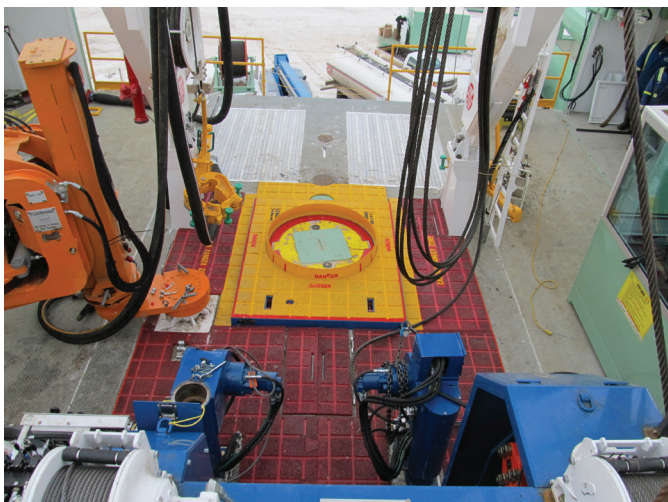
The Lea-Der™ Invert Splash Ring is a flexible, one-piece, dual hardness ring designed for the rotary table to contain fluids and protect personnel.

## FEATURES

- Eliminates flooding on rotary table during connections
- Flexible for fast insertion and removal of slips
- Installs in seconds
- Fits all brands of rotary table mats
- Restricts foreign objects from entering the rotary table
- 100% dual hardness composite soft top and rigid bottom
- One piece construction - no assembly or metal attachments
- Large bottom flange for improved stability and fit
- Visible 360 degree DANGER warning message

## SIZES

- 32"
- 34"
- 38"
- 42"
- 52"



INVERT SPLASH RINGS





# LEA-DER™ TONG HANDLE GUARD

Designed to prevent hand crush injuries when manually using tongs during pipe make-up and breakout operations.

## FEATURES

- Simple and easy to install
- Engineered and designed for the toughest environments
- Flexible glass fiber composite materials
- Aluminum brackets for durability
- Available in Safety Yellow for high visibility

## MODELS

- **AAX/B Style Fits**
  - Webwilson AAX
  - Webwilson B
  - Foley Type B
  - Rostel B
  - Will fit majority of other straight or tapered handles
- **BJ Style Fits**
  - HT – 65 (BJ)-DB)
  - HT – 100 (SDD)
  - Wooley Super B
  - Super C
  - Super LF

TONG HANDLE GUARD





# LEA-DER™ STABBING GUIDE

Lea-Der™ Stabbing Guides are designed to eliminate damage that occurs to the pin and box end of the tubular connection. This protects the couple and stops thread and seal damage.

## FEATURES

- Made from lightweight aluminum with a high density polyurethane composite liner which is molded to a profile designed to act like a guide for the pin end into the box end
- Large grips for easy handling
- Easy quick lock prelease

## SIZES

- 5 ½" ID x 7¼" ID

# STABBING GUIDE



# LEA-DER™ TOP DRIVE KELLY BUSHING SAVER

Designed for drill pipe stabilization in top drive application, reducing the incidence of objects falling down the hole as well as protecting the master bushings.

## FEATURES

- Manufactured from high density blended polyurethane
- Polyurethane coated steel wire handles for comfort and safety

## SIZES

- 5"
- 5 ½"
- 6"
- 6 ½"
- 7"
- 9"

## PROPERTIES — WET:

- Solids: 100%
- VOC: 0
- Flash Point: 175°C

## PROPERTIES — DRY:

- Tensile strength: 3000 PSI
- Elongation: 231%
- Hardness: 95 Shore A
- Taber Abrasion: 4.4 mg Loss / 1000 cycles CS 17
- Split Tear: 400 lb F/IN
- Weatherability: 2500 Hours Passed
- Water Absorption: Approx. < 1 %
- Cold Temp. Rating: -70°C
- Dielectric Strength: (ASTM D149) 400Volts / Mil
- Independent laboratory test performed UL94-HB test for flammability of plastic materials: PASS
- UV Rating: STABLE

TOP DRIVE KELLY BUSHING SAVER

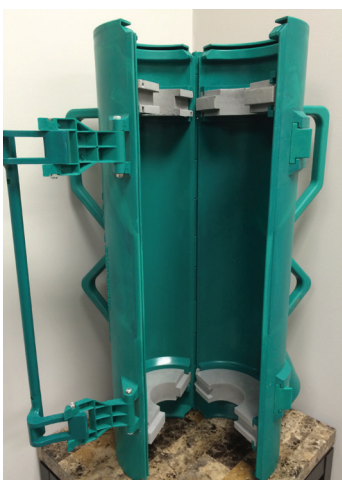




# LEA-DER™ MUD CAN

The Lea-Der™ Mud Can is an industry designed tool that solves problems and saves money.

It provides fluid containment by directing fluid through the rotary table for improved safety and environmental protection.



## FEATURES

- Manufactured from custom blended polyether polyol for maximum durability and light weight of 27 lbs.
- Ergonomically designed for easy handling with built in custom handles.
- Double latch. Double seal.
- 2" NPT discharge attachment.
- Chemical resistant.
- Manufactured to the quality standards of ISO 9001:2000.

## SIZES

- Range from 2 3/8" up to 6 7/8".





# COMPOSITE GRATING



Designed for heavier loads and longer spans, AmeriSpan Pultruded Fiberglass Grating is unidirectional in strength which provides increased load capacity and very good levels of corrosion resistance. AmeriSpan is available in stock and custom sizes for bridge walkways, platforms and trench/drain covers.



GridWalk High Strength Molded Fiberglass Grating is the ultimate in fiberglass grating. It is used for environment protection and personnel safety in both on-shore and off-shore applications. Gridwalk is used in flooring, trench covers, stairs and walkways and comes in many different colors, panel sizes, resin choices and heights.

## FEATURES

- Corrosion resistant & non-conductive
- Fire retardent
- Impact resistant
- Lightweight & strong
- Non-slip
- Easy to install

## SIZES

- Available in 1 to 3 inch depths
- Grate spacing from 33% - 60% is available



# COMPOSITE GRATING



# LEA-DER™ ROLL UP TRACTION MATTING

This product is designed to be used anywhere, on any surface for foot traction or as traction for getting your vehicle moving again.

This portable product is a quick and easy way to get traction in seconds.

## FEATURES

- Light weight
- Portable and easy to install
- Anti-slip
- High traction
- Fire proof
- Heavy duty construction
- Highly visible

## SIZES

- Standard size 3' x 8'
- Other sizes available

ROLL UP TRACTION MATTING



## LEA-DER™ BOP WEAR RINGS

Fastened between the BOP flange and the flow nipple, the Lea-Der™ BOP Wear Rings prevents BOP damage and reduces stack repairs.

### FEATURES

- Molded from industrial urethane resistant to invert and oil based mud

### SIZES

- 11" – 5000 LB
- 11" – 3000 LB
- 9" – 3000 LB
- 7" – 3000 LB

**BOP WEAR RINGS**





# LEA-DER™ DRIP TRAYS

Lea-Der™ Drip Trays provide necessary spill containment and environmental protection on the drill site, well site and drill platform.

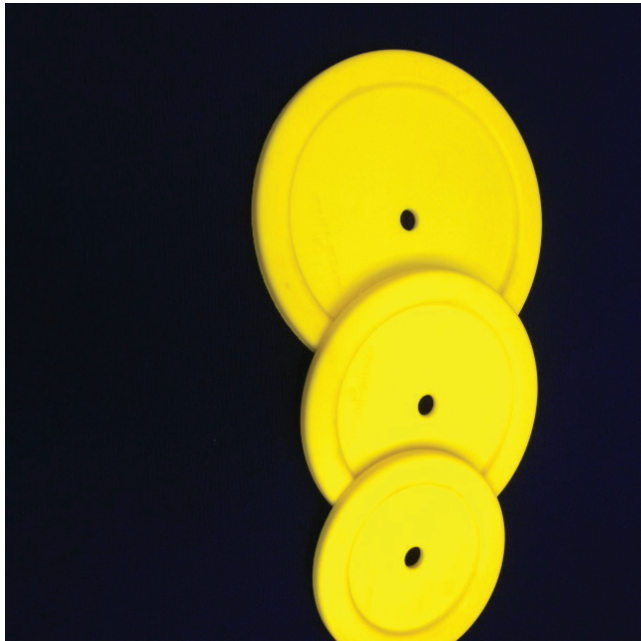
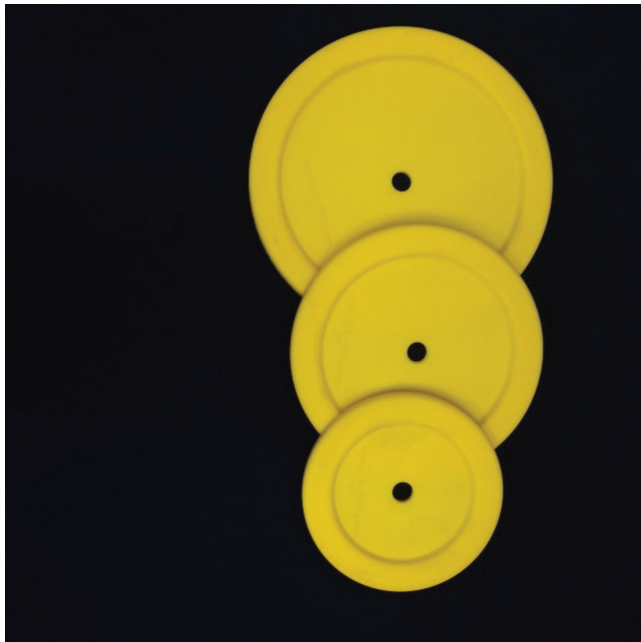
## FEATURES

- Lightweight rotational plastic product
- Durable
- Stackable

## SIZES

Product #	I.D. L x W x H	O.D. L x W x H	Capacity Imp. Gal.	Weight Lbs.
DT 1.5	20 x 9 x 6	28 x 16 x 6		5
DT 1	21 x 12 x 5	28 x 18 x 5	5	5
DT 5	23 x 11 x 9	25 x 13 x 9		10
DT 2.5	31 x 16 x 12	38 x 23 x 12		
DT 2	33 x 14 x 5	40 x 20 x 5	8	10
DT 3.5	33 x 19 x 5	39 x 25 x 5		15
DT 3	43 x 20 x 5	50 x 26 x 5	16	15
DT 4	58 x 25 x 5	66 x 31 x 5	23	20
DT 6	81 x 35 x 7	87 x 41 x 7		30
DT 7	94 x 47 x 5	103 x 57 x 5		50
DT 8		108 x 84 x 6		100
SDT 1	21 x 12 x 5	28 x 28 x 5	8	10
SDT 2	29 x 29 x 5	36 x 36 x 5	15	15
SDT 3	38 x 38 x 5	46 x 46 x 5	25	22

DRIP TRAYS



# LEA-DER™ URETHANE BRIDGE GATE GASKET

Polyurethane products are stronger, tougher and more durable than conventional elastomers and plastics making them the material of choice for the most demanding industrial applications.

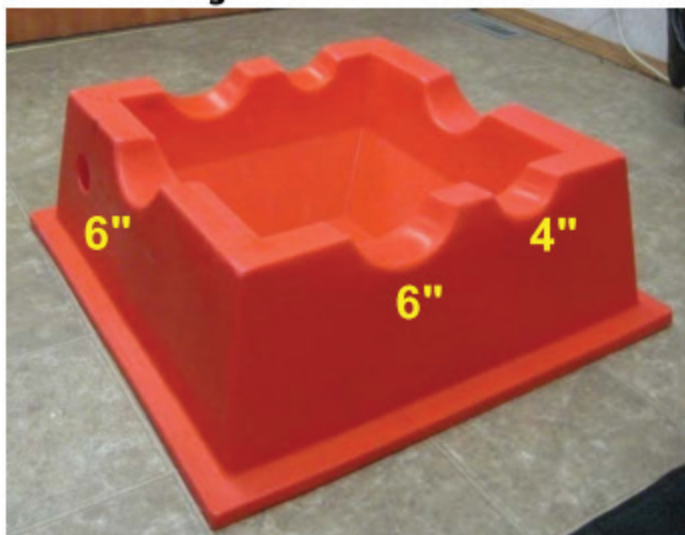
## FEATURES

- Lightweight
- Durable – reducing replacement costs
- Easy to install

## SIZES

- 6"
- 8"
- 10"
- 18"
- 19"
- 20"
- *Other sizes also available*

# URETHANE BRIDGE GATE GASKET



# LEA-DER™ LINE CONTAINMENT

Lea-Der™ Line containment trays are used for spill containment for hammer unions, valves and pipes where environment protection is required.

## FEATURES

- Stackable
- Available in a variety of colors

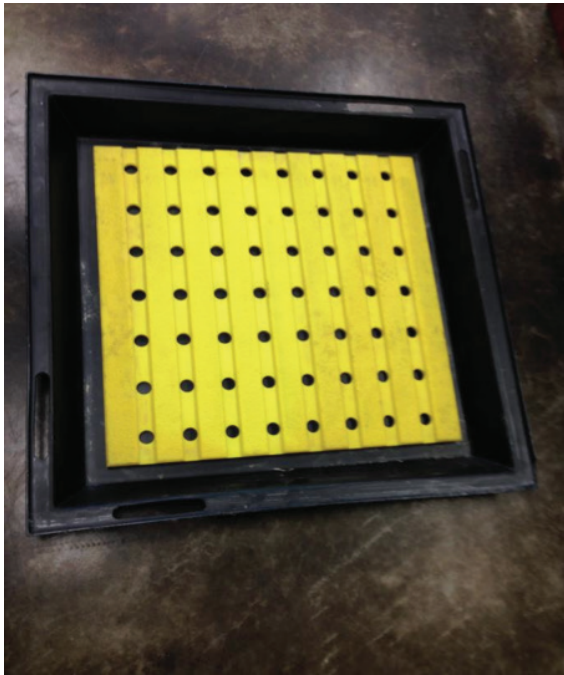


## SIZES

Product #	Bottom L x W x H	Top L x W x H	Capacity Imp. Gal.	Weight Lbs.	Line Size
LC-S	19" x 19" x 8"	14" x 14" x 8"		4.5	2" – 3"
LC-M	29" x 29" x 9"	23" x 18" x 9"	6	9	2" – 3"
LC-L	31" x 31" x 11"	25" x 25" x 11"		18	4" – 6"

LINE CONTAINMENT





# LEA-DER™ TUBING STABBING MAT & TRAY

Lea-Der™ Stabbing Mats & Trays are designed to contain fluids while protecting threads on racking tubing and drill pipe.

## FEATURES

- Tray is made from rotational mold high density plastic for easy handling and cold weather durability
- Mat is high density polyurethane elastomer molded with drain groves and 1' holes
- Large grips for easy handling
- Easy quick lock prelease
- Protects threads on tubing

## SIZES

- Standard Tray Size – 38" x 38" x 5"
- Standard Mat Size – 35.25" x 35.25"

# TUBING STABBING MAT & TRAY